

THE GLOBAL LEADER IN EMBROIDERY MACHINE
EMBROIDERY MACHINE GENERAL CATALOG

SMF

Global No.1

SunStar

With the greatest quality and technology, SunStar leads the sewing and embroidery machine industry.

SunStar takes the initiative in establishing high standards and leading the sewing and embroidery machine market in the upcoming future.



CONTENTS

02 SWF/TMS-9908-75

03 SWF/SB Plus

04 SB7

05 SWF/K Small

06 SWF/TB

07 SWF/CE

08 PS

09 SWF/K Tubular

10 KS TUBULAR

11 SWF/K Dual

12 SWF/MAN-12
SWF/E Sing le
SWF/E Sing le

13 MAS-12
SWF/K Sing le

14 ES SERIES

15 SENS

16 SQ30
SQ31B

17 SQ60i
ZD20

CONTENTS

18 Boring
Cording

19 Wide Cap Frame
Semi-wide Cap Frame
Quick Change Cap Frame

20 Frame

21 Frame

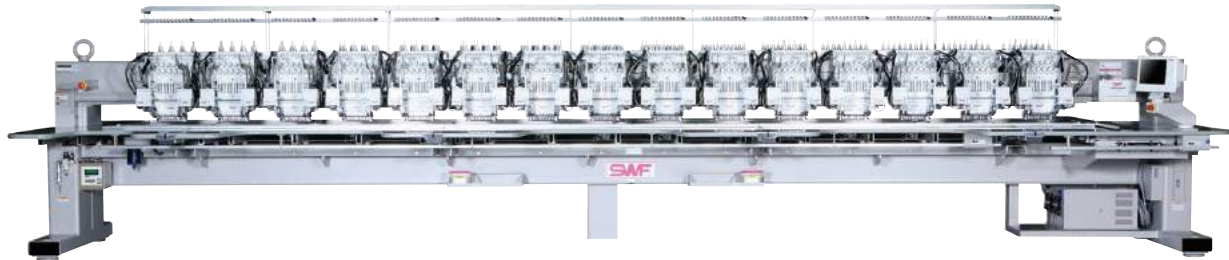
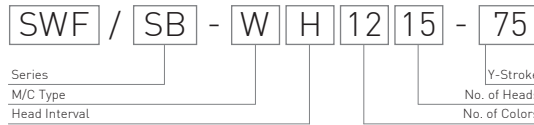
* We can make some modification for improvements without previous notice.

* Memory capacity of all machines can be changed by additional functions.

* We can make some modification for improvements without previous notice.

SWF/SB Plus SERIES

Upgrade SB series, multi-heads automatic embroidery machines

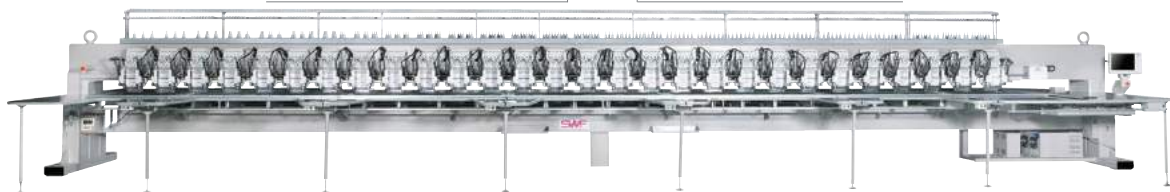


Division of Model		Head Interval [mm]	Color	Head	Y-Stroke [mm]	Alternative	Emb. Space[mm]		Machine Size [mm]		
Model	Each Head						All Head	Length	Width	Height	
SB-WA(X)636-120	200[400]	6	36	1,200	alternative	200[400] x 1,200	7,200 x 1,200	8,637	2,858	1,642	
SB-WB(X)630-100	240[480]	6	30	1,000	alternative	240[480] x 1,000	7,200 x 1,000	8,667	2,508	1,642	
SB-WB(X)630-150	240[480]	6	30	1,500	alternative	240[480] x 1,500	7,200 x 1,500	8,717	3,458	1,642	
SB-WD920-55	300	9	20	550	non alternative	300 x 550	6,000 x 550	7,275	1,545	1,642	
SB-WD920-100	300	9	20	1,000	non alternative	300 x 1,000	6,000 x 1,000	7,287	2,508	1,642	
SB-WD922-120	300	9	22	1,200	non alternative	300 x 1,200	6,600 x 1,200	7,937	2,858	1,642	
SB-WD(X)920-75	300[600]	9	20	750	alternative	300[600] x 750	6,000 x 750	7,587	1,968	1,642	
SB-WD(X)922-100	300[600]	9	22	1,000	alternative	300[600] x 1,000	6,600 x 1,000	8,187	2,508	1,642	
SB-WE920-55	330	9	20	550	non alternative	330 x 550	6,600 x 550	7,905	1,545	1,642	
SB-WE(BX)920-130	330[660]	9	20	1,300	alternative	330[660] x 1,300	6,600 x 1,300	8,620	3,058	1,642	
SB-WE(X)920-120	330[660]	9	20	1,200	alternative	330[660] x 1,200	6,600 x 1,200	8,297	2,858	1,642	
SB-WH918-120	400	9	18	1,200	non alternative	400 x 1,200	7,200 x 1,200	8,637	2,858	1,642	
SB-WH(X)918-120	400[800]	9	18	1,200	alternative	400[800] x 1,200	7,200 x 1,200	9,030	2,858	1,642	
SB-WH(BX)918-130	400[800]	9	18	1,300	alternative	400[800] x 1,300	7,200 x 1,300	9,430	3,058	1,642	

Specifications					
Speed	Max. 1,200 rpm	Bobbin Winder	Standard		
Stitching Length	0.1 ~ 12.7 mm	Upper Thread Holding Unit	Standard		
Motor	Main	Servo Motor x 1	Lubrication System	Auto Lubrication System	
	X-Y	Servo Motor x 2	Operation Box	Standard : Color LCD Screen	
Electricity	1-Phase 200V, 220V, 240V [50/60Hz]		Hook	Option : Large Hook * Factory option	
	3-Phase 200V, 220V, 240V, 350V, 380V, 415V [50/60Hz]		Memory Capacity	Standard : 4,000,000 stitches	
Power Consumption	2.7 kW	Memory Media	USB Memory Stick		
Optional Device	SQ30, SQ31B, SQ60i, ZD20, Cording, Boring	Safety Device	Standard : Emergency Stop, Error Code Message		

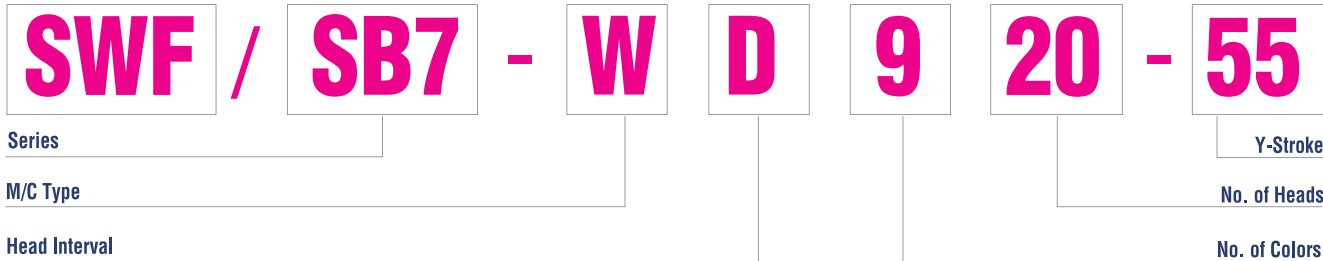
SWF/SB Plus [24/28 Heads]

28 Heads, multi-heads automatic embroidery machines



Division of Model		Head Interval [mm]	Color	Head	Y-Stroke [mm]	Alternative	Emb. Space[mm]		Machine Size [mm]		
Model	Each Head						All Head	Length	Width	Height	
SB-WE(BX)924-130	330[660]	9	24	1,300	alternative	330[660] x 1,300	7,920 x 1,300	9,990	3,089	1,642	
SB-WE(X)928-120	330[660]	9	28	1,200	alternative	330[660] x 1,200	9,240 x 1,200	10,980	2,889	1,642	
SB-WE(X)928-150	330[660]	9	28	1,500	alternative	330[660] x 1,500	9,240 x 1,500	10,980	3,489	1,642	

Specifications					
Speed	Max. 950 rpm	Bobbin Winder	Standard		
Stitching Length	0.1 ~ 12.7 mm	Upper Thread Holding Unit	Standard		
Motor	Main	Servo Motor x 1	Lubrication System	Auto Lubrication System	
	X-Y	Servo Motor x 2	Operation Box	Standard : Color LCD Screen	
Electricity	1-Phase 200V, 220V, 240V [50/60Hz]		Hook	Option : Large Hook * Factory option	
	3-Phase 200V, 220V, 240V, 350V, 380V, 415V [50/60Hz]		Memory Capacity	Standard : 4,000,000 stitches	
Power Consumption	2.7 kW	Memory Media	USB Memory Stick		
Optional Device	SQ30, SQ31B, SQ60i, ZD20, Cording, Boring	Safety Device	Standard : Emergency Stop, Error Code Message		



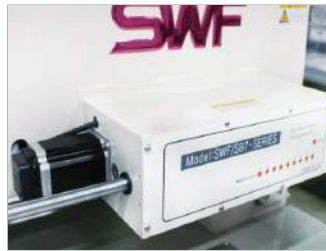
15.1 inch OP box

- The new OP has a larger screen size and made up of easy UI



Main control box

- The control box used in all new models of SunStar ensures high reliability



Improvement of color change structure

- The speed of color change is faster than conventional embroidery machines, which contributes to the improvement of productivity



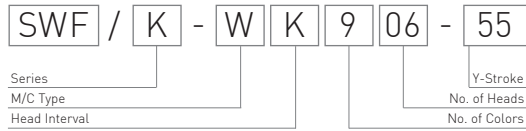
Improvement user convenience

- 400 design rooms / Total Memory 40 Million
- Photostitch function
- Total 4 Needle Information
- Embroidery design in USB can be previewed

Specifications

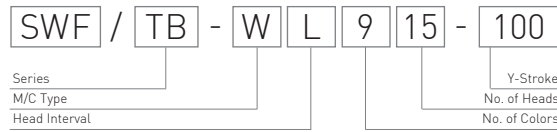
Max. speed	Max. 1,200rpm	
Stitching length (mm)	0.1-12.7mm	
Motor	Main	Servo Motor x 1
	X-Y	Servo Motor x 2
Electricity		1-Phase 200V, 220V, 240V [50/60Hz]
		3-Phase 200V, 220V, 240V, 350V, 380V, 415V [50/60Hz]
Power consumption	2.7 kw	
Bobbin Winder	Standard	
Operation Box	15" Touch LCD	
Hook	Standard Hook	
Memory capacity	Total: 40,000,000 Stitches, 1Design 2,000,000 Stitches	
Memory media	USB Memory Stick	
Safety device	Standard: Emergency Stop, Error Code Message	
Option device	SQ60i Plus, SQ70i, Cording, Boring	

※ Specifications and appearance of products are subject to change without notice for the performance improvement.



Division of Model											
Model	Head Interval [mm]	Color	Head	Y-Stroke [mm]	Alternative	Emb. Space[mm]		Machine Size[mm]			
						Each Head	All Head	Length	Width	Height	
K-WD904-55	300	9	4	550	non alternative	300 x 550	1,200 x 550	2,417	1,530.5	1,727	
K-WD904-75	300	9	4	750	non alternative	300 x 750	1,200 x 750	2,417	1,930.5	1,727	
K-WD906-55	300	9	6	550	non alternative	300 x 550	1,800 x 550	3,017	1,530.5	1,727	
K-WD906-65	300	9	6	650	non alternative	300 x 650	1,800 x 650	3,017	1,730.5	1,727	
K-WD906-75	300	9	6	750	non alternative	300 x 750	1,800 x 750	3,017	1,930.5	1,727	
K-WE904-120	330	9	4	1,200	non alternative	330 x 1,200	1,320 x 1,200	2,567	2,862	1,727	
K-WE906-55	330	9	6	550	non alternative	330 x 550	1,980 x 550	3,205	1,530	1,727	
K-WE(X)906-75	330[660]	9	6	750	alternative	330[660] x 750	1,980 x 750	3,557	1,922	1,727	
K-WE908-55	330	9	8	550	non alternative	330 x 550	2,640 x 550	3,975	1,530.5	1,727	
K-WE1204-55	330	12	4	550	non alternative	330 x 550	1,320 x 550	2,567	1,530.5	1,727	
K-WE1204-65	330	12	4	650	non alternative	330 x 650	1,320 x 650	2,567	1,730.5	1,727	
K-WE1204-75	330	12	4	750	non alternative	330 x 750	1,320 x 750	2,567	1,930.5	1,727	
K-WE1204-120	330	12	4	1,200	non alternative	330 x 1,200	1,320 x 1,200	2,567	2,862	1,727	
K-WE1206-55	330	12	6	550	non alternative	330 x 550	1,980 x 550	3,227	1,530.5	1,727	
K-WE1206-65	330	12	6	650	non alternative	330 x 650	1,980 x 650	3,227	1,730.5	1,727	
K-WE1206-75	330	12	6	750	non alternative	330 x 750	1,980 x 750	3,227	1,930.5	1,727	
K-WE1208-75	330	12	8	750	non alternative	330 x 750	2,640 x 750	3,887	1,932	1,727	
K-WE(X)904-120	330[660]	9	4	1,200	alternative	330[660] x 1,200	1,320 x 1,200	3,227	2,862	1,727	
K-WH906-55	400	9	6	550	non alternative	400 x 550	2,400 x 550	3,705	1,522	1,727	
K-WH(X)906-120	400[800]	9	6	1,200	alternative	400[800] x 1,200	2,400 x 1,200	4,155	2,853	1,727	
K-WH908-75	400	9	8	750	non alternative	400 x 750	3,200 x 750	4,495	1,922	1,727	
K-WH1204-75	400	12	4	750	non alternative	400 x 750	1,600 x 750	2,917	1,930.5	1,727	
K-WH1206-75	400	12	6	750	non alternative	400 x 750	2,400 x 750	3,717	1,930.5	1,727	
K-WJ906-100	450	9	6	1,000	non alternative	450 x 1,000	2,700 x 1,000	4,067	2,462	1,727	
K-WJ906-120	450	9	6	1,200	non alternative	450 x 1,200	2,700 x 1,200	4,067	2,862	1,727	
K-WJ(X)906-120	450[900]	9	6	1,200	alternative	450[900] x 1,200	2,700 x 1,200	4,567	2,862	1,727	
K-WK904-55	500	9	4	550	non alternative	500 x 550	2,000 x 550	3,417	1,530.5	1,727	
K-WK906-55	500	9	6	550	non alternative	500 x 550	3,000 x 550	4,417	1,530.5	1,727	
K-WK1204-55	500	12	4	550	non alternative	500 x 550	2,000 x 550	3,417	1,530.5	1,727	
K-WK(X)1206-100	500[1,000]	12	6	1,000	alternative	500[1,000] x 1,000	3,000 x 1,000	4,955	2,453	1,727	

Specifications			
Speed	Max. 1,000 rpm	Bobbin Winder	Standard
Stitching Length	0.1 - 12.7 mm	Operation Box	Standard : Color LCD Screen
Motor	Main	Servo Motor x 1	Hook
	X-Y	Pulse Motor x 2	Memory Capacity
Electricity	1-Phase 100V,110V, 120V, 200V, 220V, 240V [50/60Hz]	Memory Media	Standard : 4,000,000 stitches
Power Consumption	900 W	Safety Device	USB Memory Stick
Optional Device	SQ30, SQ60i, ZD20, Cording, Boring		Standard : Emergency Stop, Error Code Message

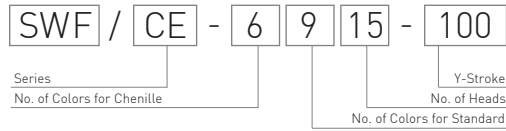


Division of Model		Head Interval [mm]	Color	Head	Y-Stroke [mm]	Emb. Space [mm]		Machine Size [mm]		
Model	Each Head					All Head	Length	Width	Height	
TB-WJ614-75		450	6 + 1	14 + 14	750	450 x 750	6,750 x 750	8,468.5	1,958.5	1,827
TB-WJ614-100		450	6 + 1	14 + 14	1,000	450 x 1,000	6,750 x 1,000	8,468.5	2,498.5	1,827
TB-WJ614-120		450	6 + 1	14 + 14	1,200	450 x 1,200	6,750 x 1,200	8,468.5	2,848.5	1,827
TB-WL906-120		550	9 + 1	6 + 6	1,200	550 x 1,200	3,300 x 1,200	5,650	2,848.5	1,827
TB-WL908-75		550	9 + 1	8 + 8	750	550 x 750	4,400 x 750	6,750	1,950	1,727
TB-WL910-120		550	9 + 1	10 + 10	1,200	550 x 1,200	5,500 x 1,200	7,850	2,848.5	1,727
TB-WL912-75		550	9 + 1	12 + 12	750	550 x 750	6,600 x 750	8,950	1,958.5	1,827
TB-WL912-100		550	9 + 1	12 + 12	1,000	550 x 1,000	6,600 x 1,000	8,950	2,498.5	1,827
TB-WL912-120		550	9 + 1	12 + 12	1,200	550 x 1,200	6,600 x 1,200	8,950	2,848.5	1,827
TB-WL915-100		550	9 + 1	15 + 15	1,000	550 x 1,000	8,250 x 1,000	10,650	2,509	1,827
TB-WL915-120		550	9 + 1	15 + 15	1,200	550 x 1,200	8,250 x 1,200	10,650	2,848.5	1,827
TB-WN902-100		660	9 + 1	2 + 2	1,000	660 x 1,000	1,320 x 1,000	4,105	1,175	1,727
TB-WN904-75		660	9 + 1	4 + 4	750	660 x 750	2,640 x 750	5,100	1,950	1,727
TB-WN904-100		660	9 + 1	4 + 4	1,000	660 x 1,000	2,640 x 1,000	5,100	1,175	1,727
TB-WN906-120		660	9 + 1	6 + 6	1,200	660 x 1,200	3,960 x 1,200	6,510	1,935	1,727

Specifications				
Speed	Standard	1,200 rpm	Power Consumption	1.5 kW
		1,000 rpm (10,000 mm[Length] or more)	Bobbin Winder	Standard
	TA Head	1,000 rpm [Taping & Zigzag]	Upper Thread Holding Unit	Standard
		500 rpm [Coiling]	Lubrication System	Auto Lubrication System
Stitching Length	0.1 ~ 12.7 mm		Operation Box	Standard : Color LCD Touch Screen
Motor	Main	Servo Motor x 1	Hook	Standard Hook
	X-Y	Servo Motor x 2	Memory Capacity	Standard : 4,000,000 stitches
Electricity	1-Phase 200V, 220V, 240V [50/60Hz]		Memory Media	USB Memory Stick
	3-Phase 200V, 220V, 240V, 350V, 415V [50/60Hz]		Safety Device	Standard : Emergency Stop, Error Code Message
Optional Device	SQ30, SQ31B, SQ60i, Cording, Boring			

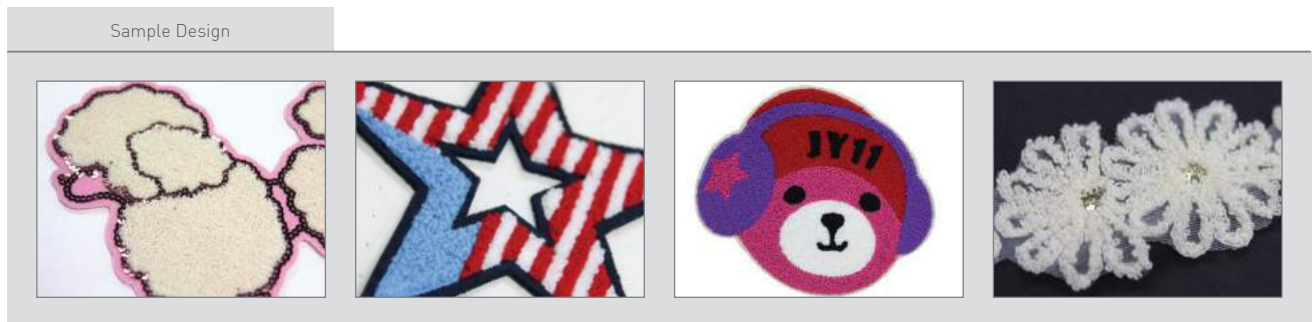
Sample Design

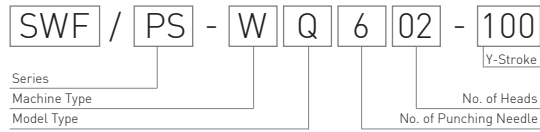




Division of Model		Head Interval [mm]	Color		Head	Y-Stroke [mm]	Emb. Space[mm]		Machine Size[mm]		
Model	Standard		Chenille	Each Head			All Head	Length	Width	Height	
CE-6904-85	500	9	6	4	850	500 x 850	2,000 x 850	4,025	2,179	1,827	
CE-6906-75	500	9	6	6	750	500 x 750	3,000 x 750	5,013	1,980	1,827	
CE-6912-75	500	9	6	12	750	500 x 750	6,000 x 750	8,058	1,978.5	1,827	
CE-6906-120	480	9	6	6	1,200	480 x 1,200	2,880 x 1,200	4,885	2,860	1,827	
CE-6015-85	480	0	6	15	850	480 x 850	7,200 x 850	8,749	2,159	1,827	
CE-6015-120	480	0	6	15	1,200	480 x 1,200	7,200 x 1,200	8,749	2,860	1,827	
CE-6902-75	480	9	6	2	750	480 x 750	960 x 750	3,545	1,983	1,727	
CE-6915-75	480	9	6	15	750	480 x 750	7,200 x 750	9,205	1,980	1,827	
CE-6915-85	480	9	6	15	850	480 x 850	7,200 x 850	9,205	2,178	1,827	
CE-6915-100	480	9	6	15	1,000	480 x 1,000	7,200 x 1,000	9,205	2,518.5	1,827	
CE-6915-120	480	9	6	15	1,200	480 x 1,200	7,200 x 1,200	9,205	2,860	1,827	
CE-6018-150	480	0	6	18	1,500	480 x 1,500	8,640 x 1,500	10,170	3,470	1,600	

Specifications					
Speed	Standard	1,200 rpm		Power Consumption	1.0 kW
	Chenille	800 rpm		Bobbin Winder	Standard
Stitching Length	0.1 - 12.7 mm		Upper Thread Holding Unit	Standard	
No. of Colors	Standard	9 Colors		Lubrication System	Auto Lubrication System
	Chenille	6 Colors		Operation Box	Standard : Color LCD Touch Screen
No. of Heads	1 Head		Hook	Standard Hook	
Head Interval	600 mm		Memory Capacity	Standard : 4,000,000 stitches	
Machine Size (L x W x H)	2,925 x 1,567 x 1,727 mm		Memory Media	USB Memory stick	
Motor	Main	Servo Motor x 1		Safety Device	Standard : Emergency Stop, Error Code Message
	X-Y	Servo Motor x 2		Electricity	1-Phase 200V, 220V, 240V [50/60Hz]
Optional Device	SQ30, SQ31B, SQ60i, ZD20, Cording, Boring		3-Phase 200V, 220V, 240V, 350V, 380V, 415V [50/60Hz]		





Division of Model

Model	Puncher [mm]	Head	Punching Space [mm]		Machine Size[mm]		
			Each head	all head	Length	Width	Height
PS-WQ602-100	6	2	800 x 800	1,600 x 800	3,865	2,500	1,275

Specifications

Speed	Max. 1,200 rpm	
Stitching Length	0.1 - 12.7 mm	
Size of Punch Hole	Φ 0.8, Φ 1.0, Φ 1.2	
Motor	Main	Servo x 1
	X-Y	Servo x 2
X-Y Moving	1,000mm x 1,000mm	
Electricity	100, 110, 120, 200, 220, 240V, 350V, 380V [50-60Hz]	
Power Consumption	1 kW	
Memory Capacity	Standard : 4,000,000 stitch	
Safety Device	Emergency Stop, Error Code Message	
Memory Media	USB Memory Stick	

TECHNOLOGY

Feature

Automatic Puncher change	Auto Suction control
6 different Puncher hole sizes	Auto lubrication control system
Multi Head & High Speed	10.4" Color LCD touch screen
Simple Suction system (Patented)	Easy Sludge box - Clean working condition
Compatibility with pattern sewing machine	Sturdy pallet frame with Easy in & out



Color LCD touch screen



Puncher



Suction system (Patented)



Auto lubrication system



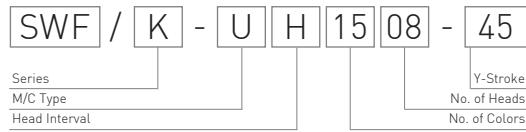
Sturdy pallet frame



Sludge box

SWF/K Tubular SERIES

Small-heads automatic tubular embroidery machines

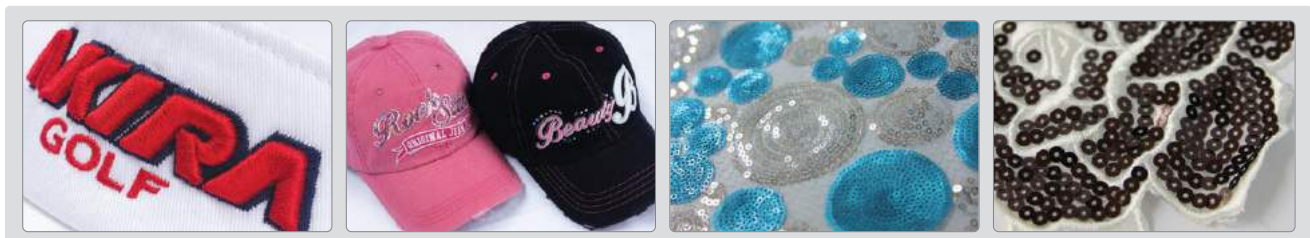


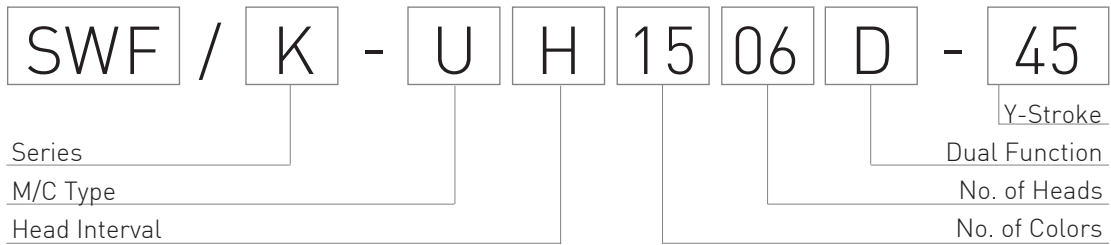
Division of Model

Model	Head Interval [mm]	Color	Head	Y-Stroke [mm]	Emb. Space[mm]				Machine Size [mm]		
					Normal	Tubular	Wide Cap Frame	Semi Cap Frame	Length	Width	Height
K-UH904-45	400	9	4	450	400 x 450	319 x 439	360 x 75	180 x 83	2,440	1,200	1,610
K-UH906-45	400	9	6	450	400 x 450	319 x 439	360 x 75	180 x 83	3,240	1,200	1,610
K-UH908-45	400	9	8	450	400 x 450	319 x 439	360 x 75	180 x 83	4,186	1,610	1,610
K-UH1204-45	400	12	4	450	400 x 450	319 x 439	360 x 75	180 x 83	2,440	1,200	1,610
K-UH1206-45	400	12	6	450	400 x 450	319 x 439	360 x 75	180 x 83	3,240	1,670	1,610
K-UH1208-45	400	12	8	450	400 x 450	319 x 439	360 x 75	180 x 83	4,186	1,720	1,610
K-UH1506-45	400	15	6	450	400 x 450	319 x 439	360 x 75	180 x 83	3,240	1,670	1,610
K-UH1508-45	400	15	8	450	400 x 450	319 x 439	360 x 75	180 x 83	4,186	1,720	1,610
K-UK604-45	500	6	4	450	500 x 450	419 x 439	360 x 75	180 x 83	2,940	1,670	1,610
K-UK606-45	500	6	6	450	500 x 450	419 x 439	360 x 75	180 x 83	3,986	1,720	1,610
K-UK902-45	500	9	2	450	500 x 450	419 x 439	360 x 75	180 x 83	1,940	1,200	1,610
K-UK904-45	500	9	4	450	500 x 450	419 x 439	360 x 75	180 x 83	2,940	1,200	1,610
K-UK906-45	500	9	6	450	500 x 450	419 x 439	360 x 75	180 x 83	3,986	1,720	1,610
K-UK1202-45	500	12	2	450	500 x 450	419 x 439	360 x 75	180 x 83	1,940	1,670	1,610
K-UK1204-45	500	12	4	450	500 x 450	419 x 439	360 x 75	180 x 83	2,940	1,670	1,610
K-UK1206-45	500	12	6	450	500 x 450	419 x 439	360 x 75	180 x 83	3,986	1,720	1,610
K-UK1502-45	500	15	2	450	500 x 450	419 x 439	360 x 75	180 x 83	1,940	1,670	1,610
K-UK1504-45	500	15	4	450	500 x 450	419 x 439	360 x 75	180 x 83	2,940	1,670	1,610
K-UK1506-45	500	15	6	450	500 x 450	419 x 439	360 x 75	180 x 83	3,986	1,720	1,610

Specifications

Speed	Max. 1,000 rpm	Bobbin Winder	Standard
Stitching Length	0.1 - 12.7 mm	Upper Thread Holding Unit	Standard
Motor	Main: Servo Motor x 1	Lubrication System	Semi-auto Lubrication System
	X-Y: Pulse Motor x 3	Operation Box	Standard : Color LCD Screen
Electricity	1-Phase 100V, 110V, 120V, 200V, 220V, 240V [50/60Hz]	Hook	Option : Large Hook * Factory option
Power Consumption	2 Heads : 700 W	Memory Capacity	Standard : 4,000,000 stitches
	4, 6, 8 Heads : 1.0 kW	Memory Media	USB Memory Stick
Optional Device	SQ30, SQ60i, ZD20, Cording, Boring, Cap Frame[Semi/Wide]	Safety Device	Standard : Emergency Stop, Error Code Message





Division of Model

Model	Head Interval [mm]	Color	Head	Y-Stroke [mm]	Emb. Space[mm]				Machine Size [mm]		
					Normal	Tubular	Wide Cap Frame	Semi Cap Frame	Length	Width	Height
K-UH904D-45	400	9	4	450	400 x 450	319 x 439	360 x 75	180 x 83	3,475	1,580	1,610
K-UH906D-45	400	9	6	450	400 x 450	319 x 439	360 x 75	180 x 83	4,000	1,580	1,610
K-UH908D-45	400	9	8	450	400 x 450	319 x 439	360 x 75	180 x 83	4,530	1,580	1,610
K-UH912D-45	400	9	12	450	400 x 450	319 x 439	360 x 75	180 x 83	6,430	1,580	1,610
K-UH1204D-45	400	12	4	450	400 x 450	319 x 439	360 x 75	180 x 83	3,475	1,580	1,610
K-UH1206D-45	400	12	6	450	400 x 450	319 x 439	360 x 75	180 x 83	4,000	1,580	1,610
K-UH1208D-45	400	12	8	450	400 x 450	319 x 439	360 x 75	180 x 83	4,530	1,580	1,610
K-UH1212D-45	400	12	12	450	400 x 450	319 x 439	360 x 75	180 x 83	6,430	1,580	1,610
K-UH1504D-45	400	15	4	450	400 x 450	319 x 439	360 x 75	180 x 83	3,475	1,580	1,610
K-UH1506D-45	400	15	6	450	400 x 450	319 x 439	360 x 75	180 x 83	4,000	1,580	1,610
K-UH1508D-45	400	15	8	450	400 x 450	319 x 439	360 x 75	180 x 83	4,530	1,580	1,610
K-UH1512D-45	400	15	12	450	400 x 450	319 x 439	360 x 75	180 x 83	6,430	1,580	1,610

Specifications

Speed	Tubular	Max. 1,000 rpm	Bobbin Winder	Standard
	Wide Cap	Max. 850 rpm(4,6,8 Heads), 750 rpm(12 Heads)	Upper Thread Holding Unit	Standard
	Semi Cap	Max. 850 rpm(4,6,8 Heads), 750 rpm(12 Heads)	Lubrication System	Semi-auto Lubrication System
Stitching Length	0.1 ~ 12.7 mm		Operation Box	Standard : Color LCD Touch Screen
Motor	Main	Servo Motor x 2	Hook	Standard Hook
	X-Y	Pulse Motor x 6	Memory Capacity	Standard : 4,000,000 stitches
Electricity	1-Phase 100V, 110V, 120V, 200V, 220V, 240V [50/60Hz]		Memory Media	USB Memory Stick
Power Consumption	1.5 kW		Safety Device	Standard : Emergency Stop, Error Code Message
Optional Device	SQ30, SQ60i, ZD20, Cording, Boring, Cap Frame[Semi/Wide]			

SWF/MAN-12

Single-head automatic embroidery machine



Specifications			
Embroidering Range [X x Y]mm	Normal	310 x 180	
	Inner Space	Wide Cap Frame	360 x 75
		Semi-wide Cap Frame	180 x 83
		Tubular Frame	310 x 180
Machine Size[L x W x H]mm	870 x 689 x 736		
Machine Size[L x W x H]mm (Table Stand)	870 x 689 x 1,506		
Speed	Max. 1,000 rpm		
Stitching Length	0.1 ~ 12.7 mm		
Motor	Main	BLDC Motor x 1	
	X-Y	Pulse Motor x 2	
Electricity	1-Phase Free Voltage(100 ~ 240V) / [50/60Hz]		
Power Consumption	500 W		
Bobbin Winder	Option		
Operation Box	Standard : Color LCD Touch Screen		
Hook	Standard Hook		
Memory Capacity	Standard : 3,000,000 stitches		
Memory Media	USB Memory Stick		
Safety Device	Standard : Emergency Stop, Error Code Message		
Optional Device	Cap Frame[Semi/Wide]		

SWF/E Single SERIES

SWF/E-T1201, SWF/E-T1501

Single-head automatic embroidery machine



Specifications			
Embroidering Range [X x Y]mm	Normal	520 x 360	
	Inner Space	Wide Cap Frame	360 x 75
		Semi-wide Cap Frame	180 x 83
		Tubular Frame	412 x 357
Machine Size[L x W x H]mm	1,191 x 1,113 x 1,408		
Speed	Max. 1,200 rpm		
Stitching Length	0.1 ~ 12.7 mm		
Motor	Main	BLDC Motor x 1	
	X-Y	Pulse Motor x 2	
Electricity	1-Phase Free Voltage(100 ~ 240V) / [50/60Hz]		
Power Consumption	500 W		
Bobbin Winder	Standard		
Upper Thread Holding Unit	Option		
Operation Box	Standard : Color LCD Screen		
Hook	Standard Hook		
Memory Capacity	Standard : 4,000,000 stitches		
Memory Media	USB Memory Stick		
Safety Device	Standard : Emergency Stop, Error Code Message		
Optional Device	SQ30, SQ60i, ZD20, Cording, Boring, Cap Frame[Semi/Wide]		

SWF/E Single SERIES

SWF/E-T1201C, SWF/E-T1501C

Single-head automatic embroidery machine (Compact Type)



Specifications			
Embroidering Range [X x Y]mm	Normal	460 x 300	
	Inner Space	Wide Cap Frame	360 x 75
		Semi-wide Cap Frame	180 x 83
		Tubular Frame	412 x 270
Machine Size[L x W x H]mm	730.3 x 727.2 x 853.8		
Machine Size[L x W x H]mm (Table Stand)	730.3 x 727.2 x 1540.8		
Speed	Max. 1,200 rpm		
Stitching Length	0.1 ~ 12.7 mm		
Motor	Main	BLDC Motor x 1	
	X-Y	Pulse Motor x 2	
Electricity	1-Phase Free Voltage(100 ~ 240V) / [50/60Hz]		
Power Consumption	500 W		
Bobbin Winder	Standard		
Upper Thread Holding Unit	Option		
Operation Box	Standard : Color LCD Screen		
Hook	Standard Hook		
Memory Capacity	Standard : 4,000,000 stitches		
Memory Media	USB Memory Stick		
Safety Device	Standard : Emergency Stop, Error Code Message		
Optional Device	Boring, Cap Frame[Semi/Wide]		

MAS-12

MAS-12

Single-head automatic embroidery machine (Bridge Type)



Specifications

Embroidering Range [X x Y]mm	Inner Space	Wide Cap Frame	360 x 75
		Semi Wide Cap Frame	180 x 83
		Tubular Frame	360 x 230
Machine Size [L x W x H]mm			870 x 836 x 764
Machine Size [L x W x H]mm [Table Stand]			870 x 836 x 1,534
Speed			Max. 1,000rpm
Stitching Length			0.1-12.7mm
Motor	Main		BLDC Motor x 1
	X-Y		Pulse Motor x 2
Electricity			1-Phase Free Voltage [100~240V] / [50/60Hz]
Power Consumption			500 W
Bobbin Winder			Standard
Operation Box			Color LCD Touch Screen [New Operation Box]
Hook			Standard Hook
Memory Capacity			Standard 40,000,000 Stitches
Memory Media			USB Memory Stick
Safety Device			Standard : Emergency Stop, Error Code Message
Optional Device			Cap Frame [Semi / Wide]

※ Specifications and appearance of products are subject to change without notice for the performance improvement.

SWF/K Single SERIES

K-W1201-100

Single-head automatic embroidery machine (Wide Type)



Specifications			
Embroidering Range [X x Y]mm	1,000 x 1,000	Power Consumption	1.0 kW
Machine Size[L x W x H]mm	2,475 x 2,560 x 1,612	Bobbin Winder	Standard
Speed	Max. 1,000 rpm	Operation Box	Standard : Color LCD Screen
Stitching Length	0.1 - 12.7 mm	Hook	Standard Hook
Motor	Main	Servo Motor x 1	Memory Capacity
	X-Y	Pulse Motor x 3	Standard : 4,000,000 stitches Option : 2,000,000 stitches
Electricity	1-Phase 100V, 110V, 120V, 200V, 220V, 240V [50/60Hz]	Memory Media	USB Memory Stick
Optional Device	SQ30, ZD20, Cording, Boring	Safety Device	Standard : Emergency Stop, Error Code Message



SWF / ES - T 15 01 C

Series

No. of Heads

No. of Colors

M/C Type

Specification

[X x Y]mm Embroidering Range	Normal		460 x 300	
Speed	Inner Space	Wide Cap Frame	360 x 75 (Option)	
		Semi-wide Cap Frame	180 x 83 (Option)	
		Tubular Frame	412 x 270	
Machine Size [L x W x H] mm	Machine Size [L x W x H] mm [Table Stand]		730.3 x 727.2 x 853.8 730.3 x 727.2 x 1540.8	
	Max. 1,200 rpm	Operation Box	Color LCD Touch Screen [New Operation Box]	
Stitching Length	0.1 ~ 12.7 mm	Hook	Standard Hook	
Electricity	Main	BLDC Motor x 1	Memory Capacity	Standard 40,000,000 Stitches
	X-Y	Pulse Motor x 2	Memory Media	USB Memory Stick
Power Consumption	500 W	1-Phase Free Voltage [100 ~ 240V] / [50/60Hz]	Safety Device	Standard : Emergency Stop, Error Code Message
Bobbin Winder	Standard		Optional Device	Boring Cap Frame [Semi / Wide]

※ Specifications and appearance of products are subject to change without notice for the performance improvement.

Division of Model

Model	Color	Head	Emb. Space [mm]				Machine Size [mm]		
			Normal	Tubular	Wide Cap Frame	Semi Cap Frame	Length	Width	Height
ES-T1201	12	1	520 x 360	412 x 357	360 x 75	180 x 83	1,191	1,113	1,408
ES-T1501	15	1	520 x 360	412 x 357	360 x 75	180 x 83	1,191	1,113	1,408
ES-T1201C	12	1	460 x 300	412 x 270	360 x 75	180 x 83	730.3	727.2	1540.8
ES-T1501C	15	1	460 x 300	412 x 270	360 x 75	180 x 83	730.3	727.2	1540.8

※ We can make some modifications for improvement without previous notice.

SWF / ES - T 15 01

Series

No. of Heads

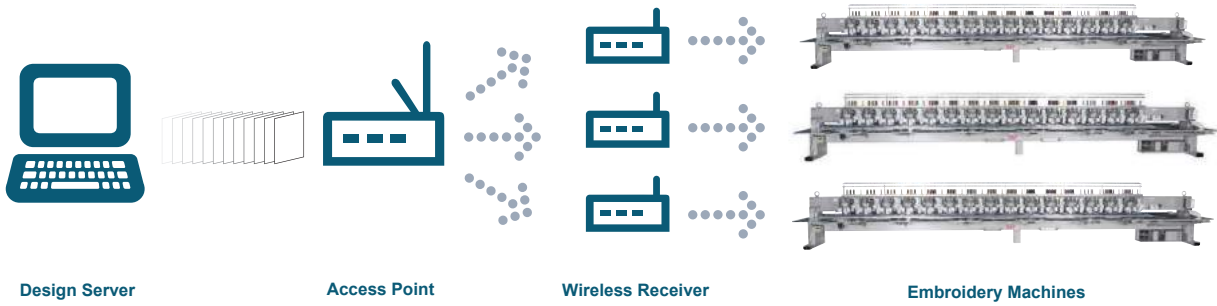
No. of Colors

M/C Type

Specification

Embroidering Range [X x Y]mm	Normal		520 x 360	
	Inner Space	Wide Cap Frame	360 x 75 (Option)	
		Semi-wide Cap Frame	180 x 83 (Option)	
		Tubular Frame	412 x 357	
Machine Size [L x W x H] mm			1,191 x 1,113 x 1,408	
Speed	Max. 1,200 rpm	Operation Box	Color LCD Touch Screen [New Operation Box]	
Stitching Length	0.1 ~ 12.7 mm	Hook	Standard Hook	
Motor	Main	BLDC Motor x 1	Memory Capacity	Standard 40,000,000 Stitches
	X-Y	Pulse Motor x 2	Memory Media	USB Memory Stick
Electricity	1-Phase Free Voltage [100 ~ 240V] / [50 / 60Hz]		Safety Device	Standard : Emergency Stop, Error Code Message
Power Consumption	500 W		Optional Device	SQ30, ZD20, Cording, Boring, Cap Frame [Semi / Wide]
Bobbin Winder	Standard			

※ Specifications and appearance of products are subject to change without notice for the performance improvement.



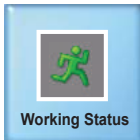
Design Server

Access Point

Wireless Receiver

Embroidery Machines

Main functions



Working status

Window showing status of the embroidery machine selected in detail. Double click to confirm enlarged drawing part in the separate window.

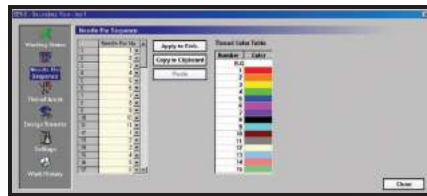
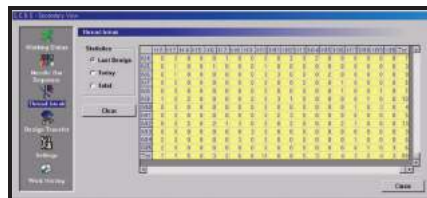
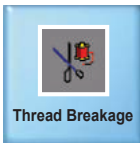


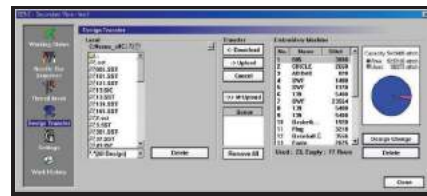
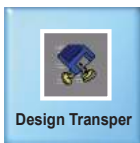
Table setting status

Window which provides setting status of sequence table for color change and functions such as Edit, Copy, Embed.



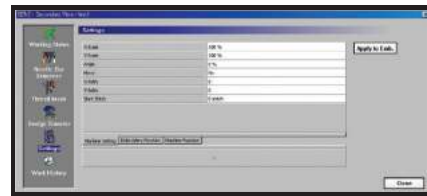
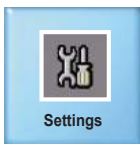
Thread Breakage

Provide thread breakage information for the embroidery machine being connected to network. (by Head, Color)



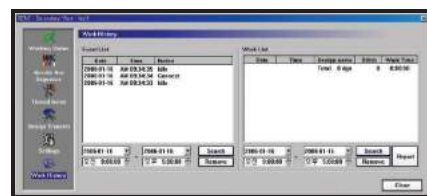
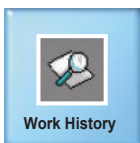
Design transfer

Transfer design using network.



Basic settings

Window which provides basic setting information of connected embroidery machine by part and application function for changed setting value

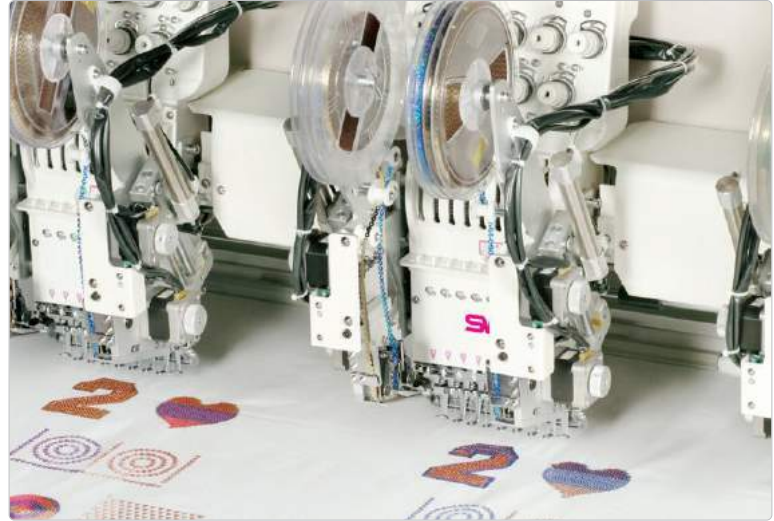


Work history

Provides status histories of connected embroidery machine and design of which work is finished. This has functions of search by condition and creating text report based on search result.

SQ30

Sequin



Main Feature

- ☑ SQ30 provide the optimal effect for spangle embroidery to cope with customer's various needs through high productivity

Benefit

- ☑ A wide range of applicable sequin spangles in diameter 2-9mm [SQ30]
- ☑ Easy to use spangle embroidery of two types

Specifications

MODEL		SQ30
Max. Speed		Max. 1,000 rpm [SB Series]
Sequin Device Attachment Type	L	Left Side
	R	Right Side
Sequin Size [mm]		Φ 2, Φ 3, Φ 4, Φ, Φ 6, Φ 7, Φ 9
Motor		Pulse Motor x 1
Compressed Air		0.49 Mpa [5.0kgf/cm ²]
Reel Size [mm]	Normal	Φ 180
	Max	Φ 225

SQ31B

Big Sequin



Main Feature

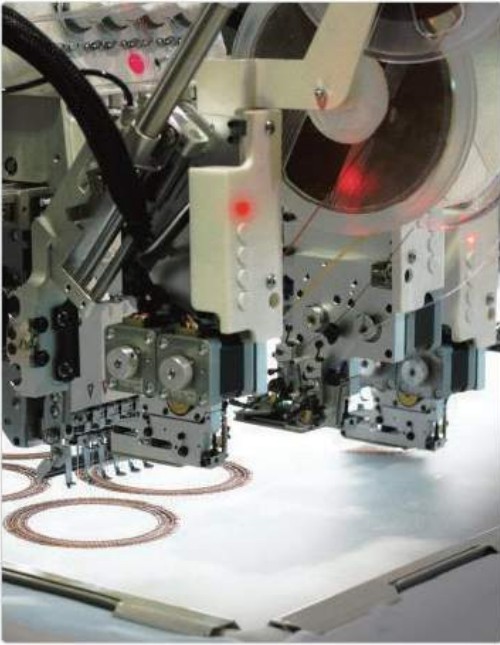
- ☑ Sequin device for big size spangles
- ☑ A wide range of applicable sequin spangles in diameter 11-25 mm

Specifications

Max. Speed	K-Series	700 rpm
	SB-Series	
Sequin Device Attachment	L	Left Side
	R	Right Side
	LR	Both Side
Sequin Size [mm]		Φ11- Φ25
Motor		Pulse Motor x 1
Compressed Air		0.49 Mpa [5.0kgf/cm ²]
Reel Size [mm]		Φ 180

SQ60i

Individual Sequin



Main Feature

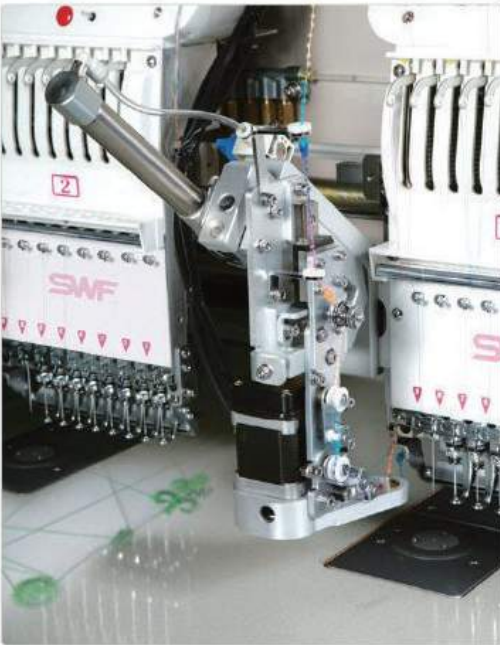
- Max. 4 different spangle sizes in different colors and shapes
- Two automatic feeding system
- Easy replacement of guide (Optional supply)
- Individual lifting for the each head

Specifications

Max. Speed	Max. 1,000 rpm [SB Series]	
Sequin Size [mm]	Φ3, Φ4, Φ5, Φ6, Φ7, Φ9.	
Motor	Pulse Motor x 2 [SQ60i-M is 3EA]	
Compressed Air	0.49 MPa [5.0kgf/cm ²]	
Reel Size [mm]	Normal	Φ 180
	Max	Φ 225
Applicable Models	SB, CE, TB, K-Series	
	[Unable to be attached to old model's Electronic Parts]	

ZD20

Zigzag Cording



Main Feature

- Various types of thread usable
- Much less stitches than generic cording
- Higher Productivity : 800 - 1,000 rpm
- Automatic lifting system on whole heads
- Manual lifting system on each head
- Much higher embroidery quality : good touch feeling
- Good stability and reliability

Specifications

Max. Speed	Max. 800 rpm [SB Series]	
Motor	Pulse Motor x 1	
Cord Diameter Size	2.5mm or less [TA-Series are suitable for cord with more than 2.5mm diameter]	
Applicable Thread	Uneven cord with 2.5mm or less	
Applicable Models	SB, CE, TA, E, K Series	
	[Unable to be attached to old model's Electronic Parts]	



Boring

Boring Attachment



Main Feature

- Boring Device cuts out various shaped holes in the fabric for special embroidery
- Easy to mount

Specifications

Running RPM	Equal to each machine's maximum RPM
Applicable Models	Attached to all machines
Usage	Make a hole in the fabric



Cording

Cording Attachment



Main Feature

- Cording device is used for cording and looping work

Benefit

- Easy to mount
- Easy to switch to looping

Specifications

Direction for Attached Device	L	Left Type
	R	Right Type
Thickness for thread	Φ 1.3 mm ~ Φ 2.5 mm	
Press Foot [1 Needle Type]	Φ 1.3 mm	
	Φ 1.7 mm	
	Φ 2.0 mm	
	Φ 2.5 mm	
Press Foot [2 Needle Type]	Φ 1.3 mm ~ Φ 1.5mm	
	Φ 1.7 mm ~ Φ 2.0 mm	
	Φ 2.3 mm ~ Φ 2.5 mm	
	Applicable Models	

Wide Cap Frame

Cap Frame



Main Feature

- ☒ Sewing on finished caps
- ☒ Cap Frame is used for Tubular type from single-head embroidery machine
- ☒ Cap frame has wide cap frame and semi-wide cap frame
- ☒ Various embroidery is provided irrespective of the size and thickness of cap

Semi-wide Cap Frame

Cap Frame



Benefit

- ☒ Semi-wide cap frame work is more stable than wide cap frame work by fixing both left and right sides firmly

Specifications

MODEL	Wide Cap Frame	Semi-wide Cap Frame
Embroidering range [X x Y]mm	360 x 75	180 x 83
Usage	Cap workhood	Cap workhood
Applicable Models	Attached all of tubular type models	Attached all of tubular type models

Quick Change Cap Frame

Cap Frame



The Quick Change cap frame driver is designed for precision performance and unsurpassed ease of operation.

The driver is supported by a slide bearing, comprised of a series of precision ball bearings that ride on a steel pivot axle, while the movement is controlled by a state of the art linear motion guide rail.

This combination creates the most advanced cap frame system in the industry and provide the means for the unequalled ease of installation and operation.

- Linear motion guide rail provides smooth precise movement for cap embroidery
- Pivot axle supports the weight of the driver
- A slide bearing provides exceptional accuracy and support
- Tapered pivot axle for superior ease of installation

Frame

Flat type machine's embroidery frames

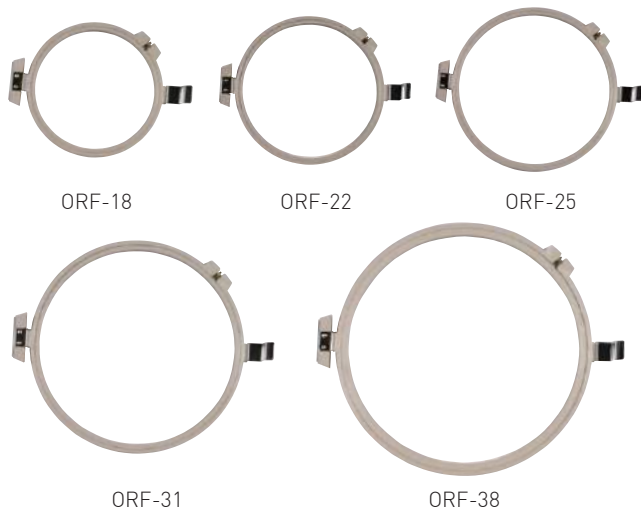
SRF (Spider Round Frame)



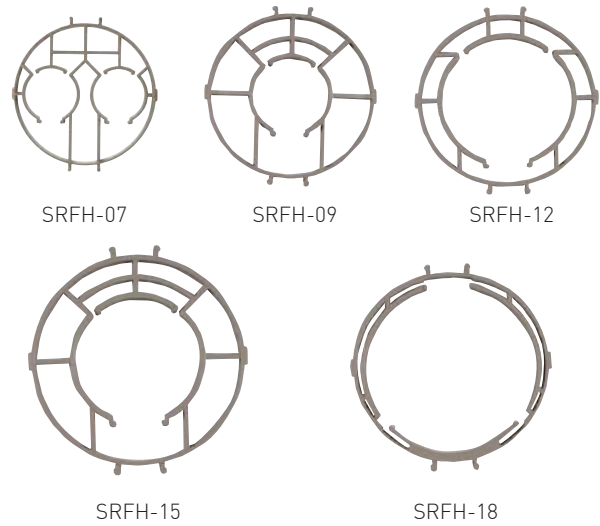
ASF (Aluminum Square Frame)



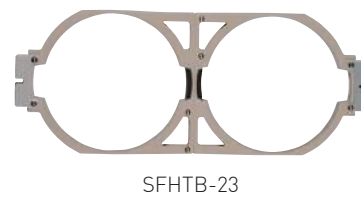
ORF (One Touch Round Frame)



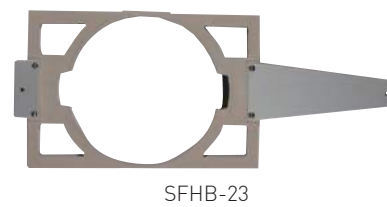
SRFH (Spider Round Frame Holder)



SFHTB (Spider Round Frame Holder Twin base)



SFHB (Spider Round Frame Holder base)



OSF (One Touch Square Frame)



KOREA

SUNSTAR CO., LTD. www.sunstar.co.kr

#39, SAEBEOL-RO, BUPYEONG-GU, INCHEON, KOREA
TEL : +82 032 580 5600 / sales@sunstar.co.kr

Global Network



SUNSTAR CIKARANG MAIN OFFICE

JL MAHONI 1 MULTIGUNA NIAGA LIPPO CIKARANG NO 3
SUKARESMI CIKARANG SELATAN KAB BEKASI - JAWABARAT, INDONESIA
TEL : +62 21 8990 4038 / 37

JAKARTA BRANCH OFFICE

KOMPLEK RUKO INKOPAL BLOK G NO.46
KELAPA GADING, JAKARTA UTARA, INDONESIA
TEL : +62 21 2945 1522-3

SUNSTAR SEMARANG BRANCH OFFICE

JL. LETJEN SUPRAPTO NO. 55, KEL. SIDOMULYO, KEC.
UNGERAN TIMUR UNGARAN, SEMARANG, JAWA TENGAH, INDONESIA
TEL : +62 24 7690 1388

SUNSTAR DHAKA OFFICE

HOUSE # 25 (BEST HOUSE) 6TH FLOOR
ROAD NO # 13, SECTOR # 10, UTTARA, DHAKA-1230.
TEL : +880 1789 447777

SUNSTAR CHITTAGONG OFFICE

MOHAJAN GOLDEN TOWER
OPPOSITE OF KARNAPHULI EPZ GATE
NORTH PATENGA, CHITTAGONG-4204
TEL : +880 1789 449999, 01716 286636,

SUNSTAR SHANGHAI

SUNSTAR SEWING TECHNOLOGY (SHANGHAI) CO.,LTD.

No. 1061-6 XINGSHUN ROAD, JIADING DISTRICT, SHANGHAI, CHINA
TEL : +86 - 021 - 6957 - 6663

USA

SUNSTAR USA OFFICE

3031 ECORONADO ST. A & B, ANAHEIM, CA 92806, USA
TEL : 714-399-3490 / eric@sunstarswf.com



KOREA

Incheon
Seoul

CHINA

Shanghai

VIETNAM

BAC GIANG

USA

SUNSTAR VIET NAM OFFICE

144 - PHAM VAN BACH ST, WARD 15, TAN BINH DISTRICT, HCMC, VIET NAM
TEL : +84 28-2253-6744
Mobile : +84 96 3096 423[EMBROIDERY MACHINE]
: +84 96 8537 099[SEWING MACHINE]

SUNSTAR VIET NAM COMPANY LIMITED

CN-10-07, LOT CN-10, VAN TRUNG INDUSTRIAL PARK, VAN TRUNG COMMUNE,
VIET YEN DISTRICT, BAC GIANG PROVINCE, VIET NAM
TEL : +84 204 366 2358

The background of the page features a series of light gray silhouettes against a white background. At the top, a row of silhouettes depicts a line of workers standing on a platform. Below them, various pieces of industrial machinery are shown, including what appears to be a large conveyor system with multiple rollers and a control panel, and other complex mechanical structures. The silhouettes are arranged in a way that suggests a factory or industrial setting.

SWF SUNSTAR CO., LTD.

#39, SAEBEOL-RO, BUPYEONG-GU, INCHEON, KOREA
TEL : +82 032 580 5600
E-mail : sales@sunstar.co.kr

www.sunstar.co.kr